

Golden Goliath Resources

TSX: GNG.V

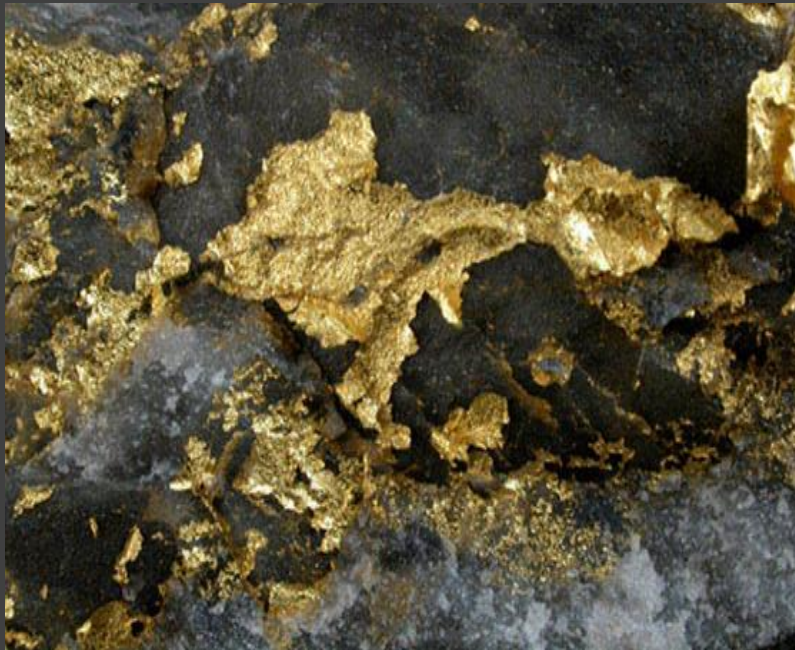
www.goldengoliath.com



Hunting Giants in the Land of Giants

Shares	107,260,889
Options	9,150,000
Warrants	NIL
Fully Diluted	116,410,889

Red Lake: The Land of Giants



90-year mining history, over 29 million ounces of gold produced.



Over 43 Billion \$\$\$ at \$1500/ oz

The Big 4:

Campbell over 12 million ounces [In Production]



Dickenson over 8 million ounces [In Production]

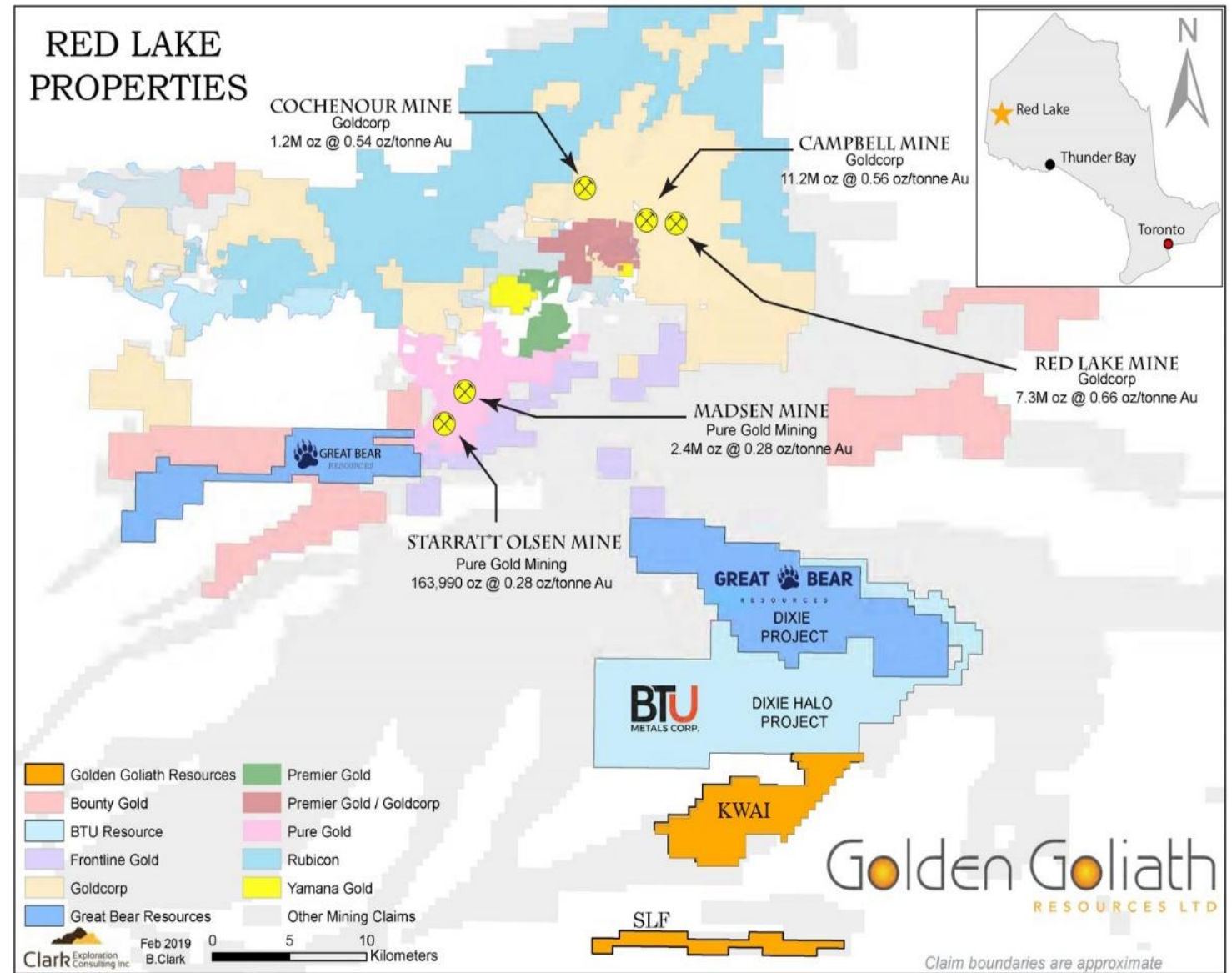
Cochenour over 1.2 million ounces [Returning to Production]

Madsen over 2.4 million ounces [Returning to Production]

Red Lake: The Land of Giants

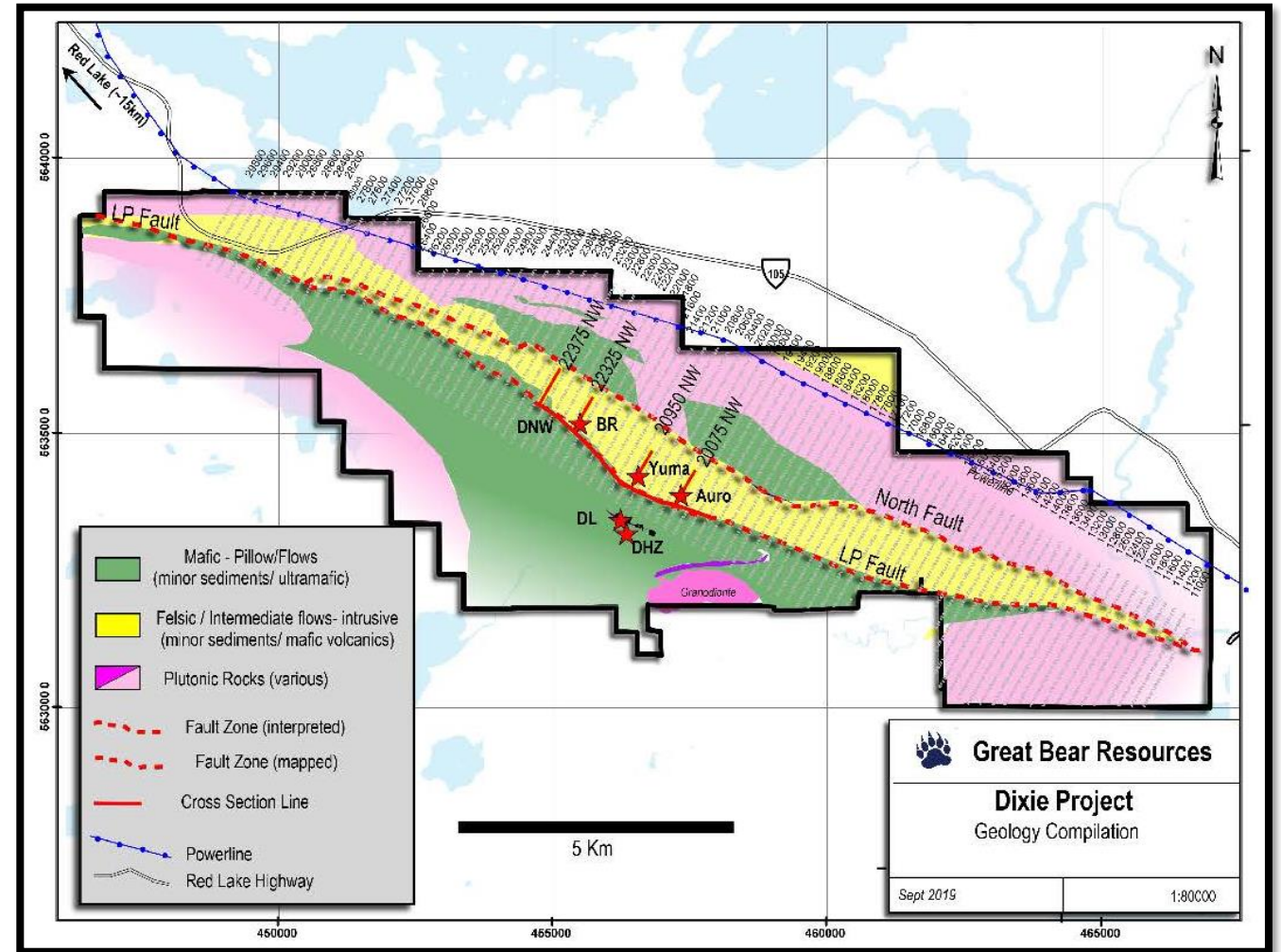
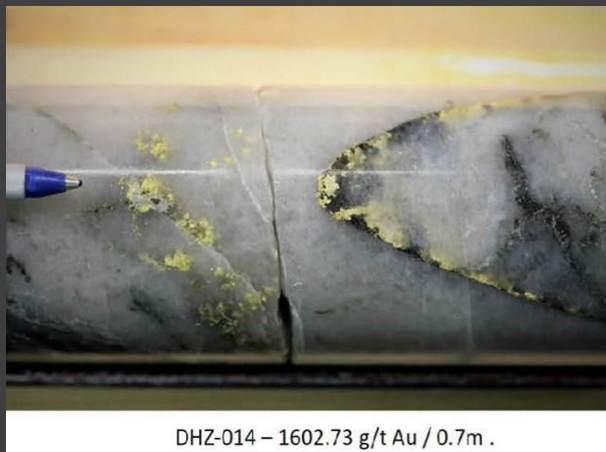
The Next Generation

- **Great Bear Dixie project:** A new Mining Camp? Drilling the LP fault structure
- **Golden Goliath KWAI project:** Pakwash fault structure deep seated cutting Archean volcanics and meta sediments
- **Golden Goliath SLF project:** Covers the deep-seated Sidney Lake fault structure



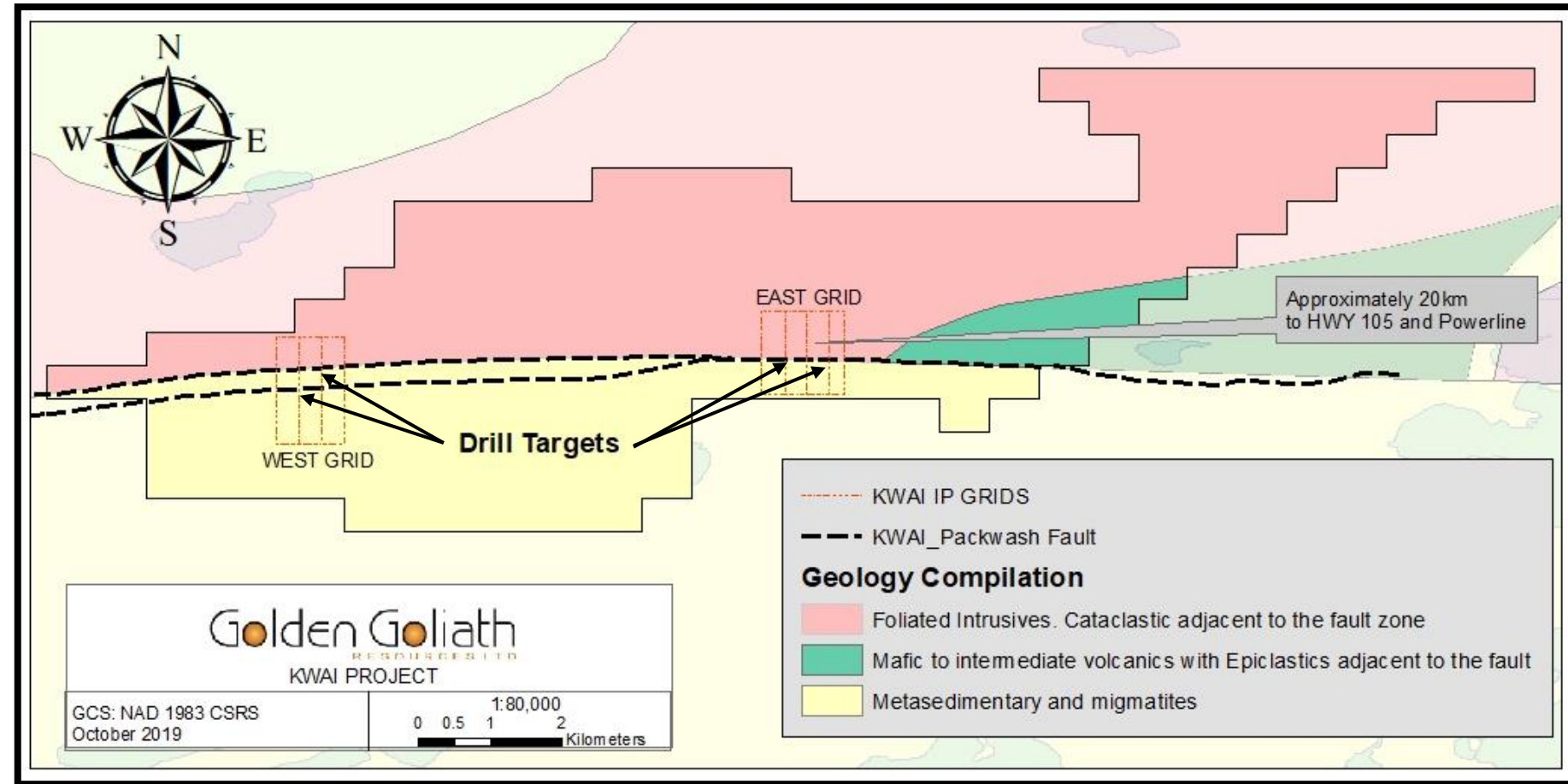
Great Bear Resources Dixie Project: Giant Discovery

- Deep seated LP fault structure with high grade (42 meters @ 5.2 g/t, including 1.5 meters @ 101.7 g/t) and bulk tonnage potential (125 meters @ 1.1 g/t) along 22 km structure with associated high grade mineralized splays.
- Great Bear share price. From a low of \$0.05 in 2016 to almost \$9.00 in 2019.



Red Lake Next Generation: Golden Goliath Resources KWAI Project: Giant Potential

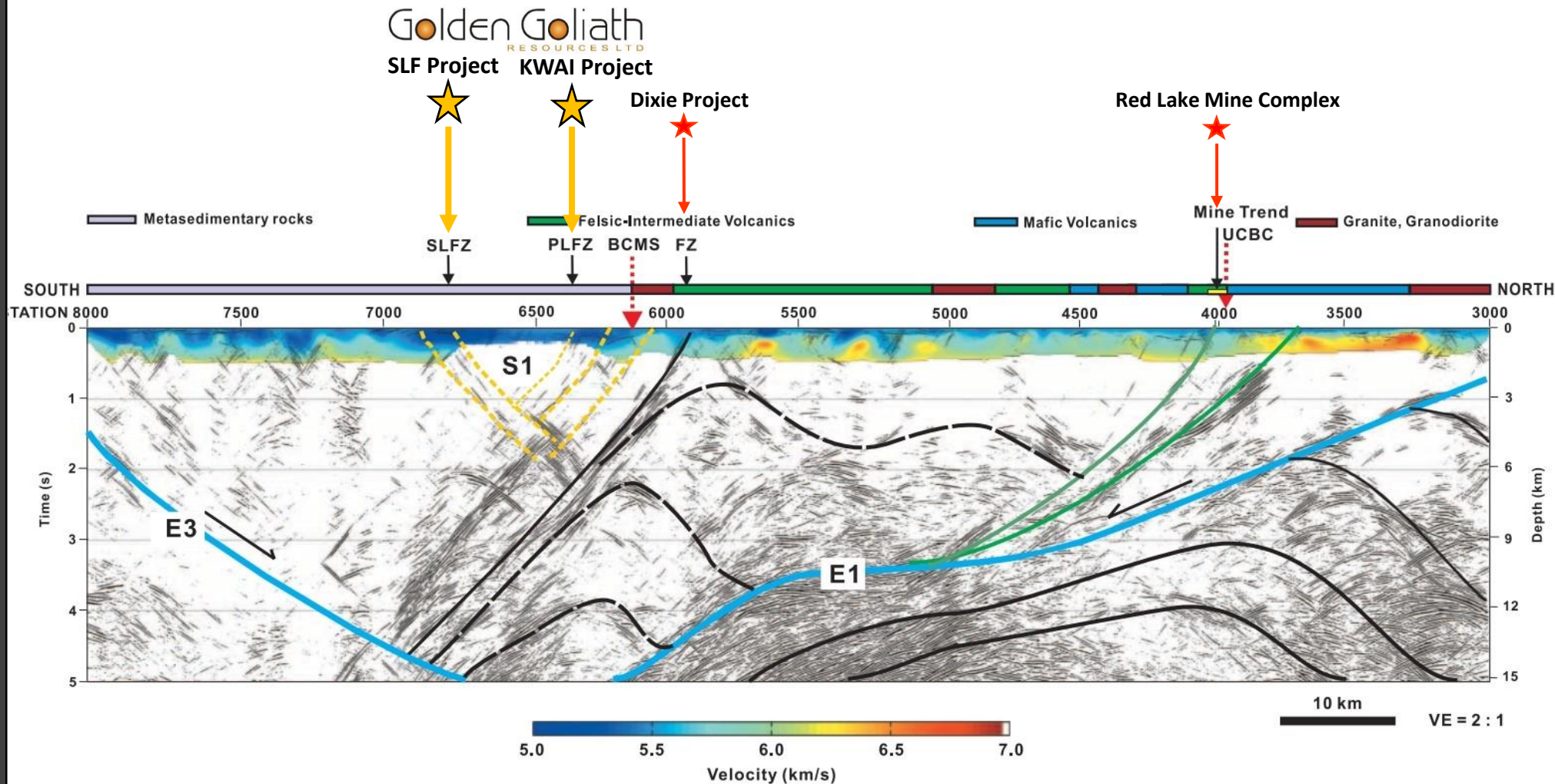
- Deep seated Pakwash Lake fault structure trace confirmed.
- Grids established across the structure to support geophysics surveys.



KWAI Project- Plan View

Red Lake Next Generation:
Golden Goliath Resources
KWAJ Project:
Giant Potential

Government Lithoprobe survey confirmed deep seated fault structures associated with Red Lake gold.

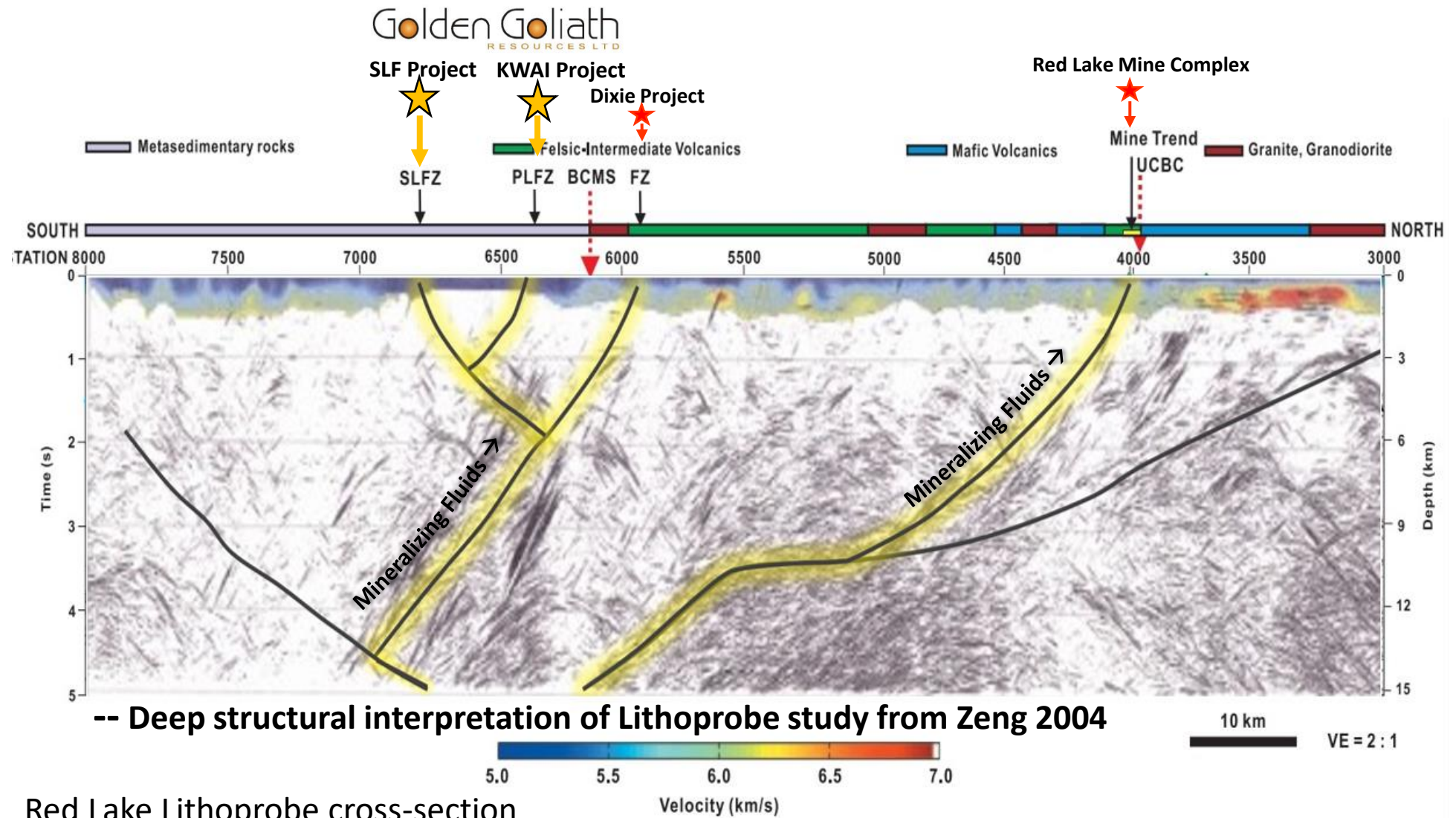


- FZ: Fault Zone
- SLFZ: Sydney Lake Fault Zone
- PLFZ: Pakwash Lake Fault Zone
- UCBC: Unconformity between the Balmer and the Confederation assemblages
- BCMS: Boundary between the Confederation assemblage and the metasedimentary rocks
- — — — — Reflector truncations
- Interpreted reflectors
- Strike-slip
- Extensional fault
- Reflections associated with shear zones

Red Lake Lithoprobe cross-section

Red Lake Next Generation:
Golden Goliath Resources
KWAJ Project:
Giant Potential

- Government Lithoprobe survey confirmed deep seated fault structures associated with Red Lake gold.



Red Lake Lithoprobe cross-section

FZ: Fault Zone

SLFZ: Sydney Lake Fault Zone

PLFZ: Pakwash Lake Fault Zone

UCBC: Unconformity between the Balmer and the Confederation assemblages

BCMS: Boundary between the Confederation assemblage and the metasedimentary rocks

Simplified version of slide 6

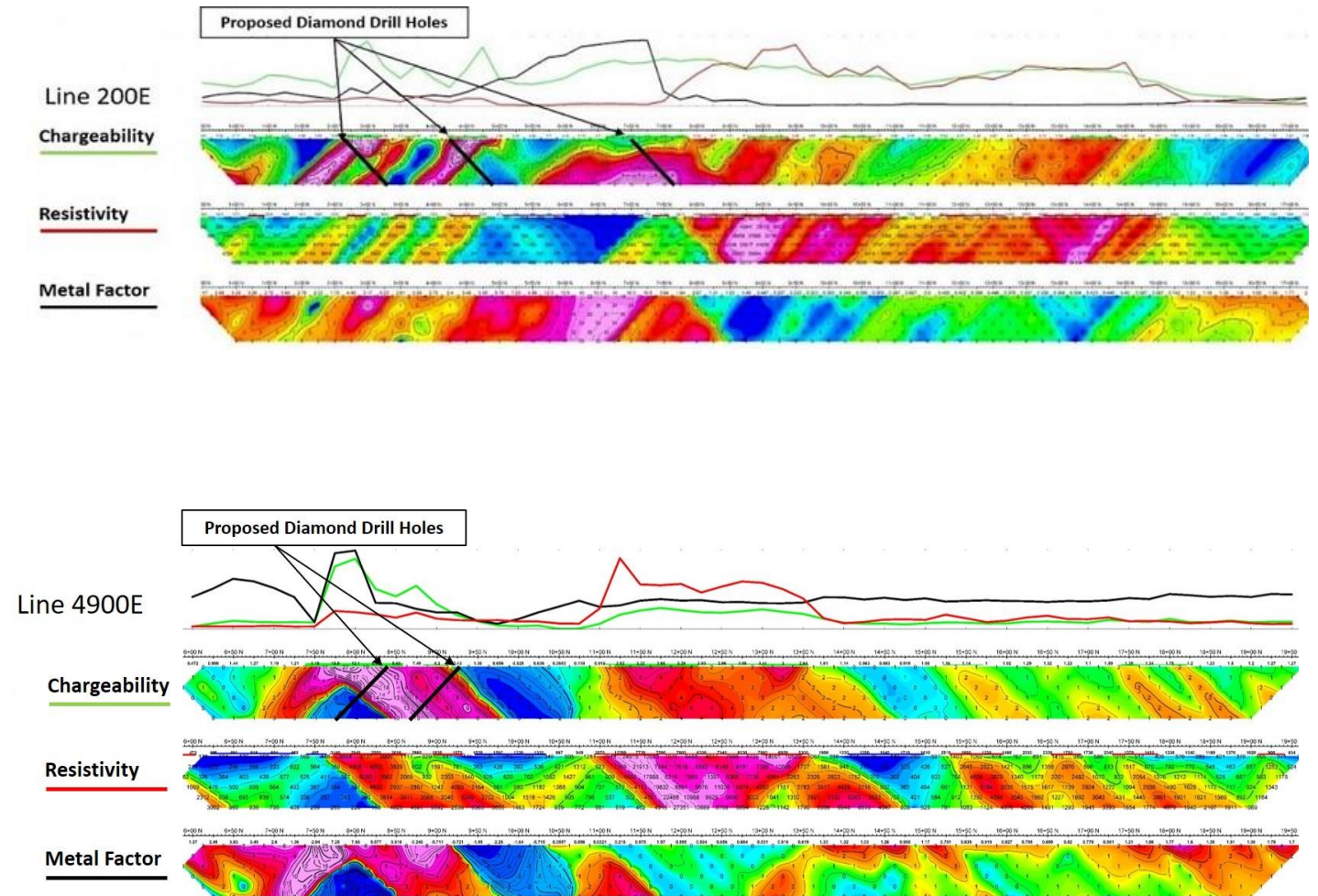
KWAI Geophysics

Independent Geophysical Engineer, Robert Middelton, BSC., MSC., Peng., who discovered the Bell Creek Mine in Timmins in 1979. Report on Kwai geophysics stated:

“The Induced Polarization survey of the KWAI Property in Red Lake has traced two major Shear Zones across the length of the grid and drill holes at selected intervals will determine the presence of gold mineralization. Shears are the main controlling structures for gold in the Red Lake Camp both at the Goldcorp Red Lake Mine and on new discoveries such as the Great Bear Dixie Lake project immediately north to the Golden Goliath KWAI property. The high Chargeability zones are caused either by disseminated sulphides which could be surrounding gold mineralization or be caused by pyrite in graphitic zones adjacent to carbonate alteration zones.”

“You are in virgin territory! And you can have a whole new discovery. The gold bearing fluids are in the area and just need the right structure to channel them.”

Two IP section 4.7 km apart along the Pakwash fault structure





Kwai IP results interpreted by John Grant and Bob Middleton:

“The IP zones for the most part returned significant conductive zones across the surveyed area. The chargeability anomalies show highs with associated lows. This may represent graphitic sediments as outlined by the lows lying next to carbonated alteration zones. The contacts of these two units as suggested by Bob Middleton could represent highly sheared contacts and thus good locations for gold deposition.

As Bob mentions, these type zones are present on the Dixie Lake Property, now held by Great Bear Resources to the north. Similar signatures to these IP responses are also evident at the currently operating Bell Creek Mine in Timmins.

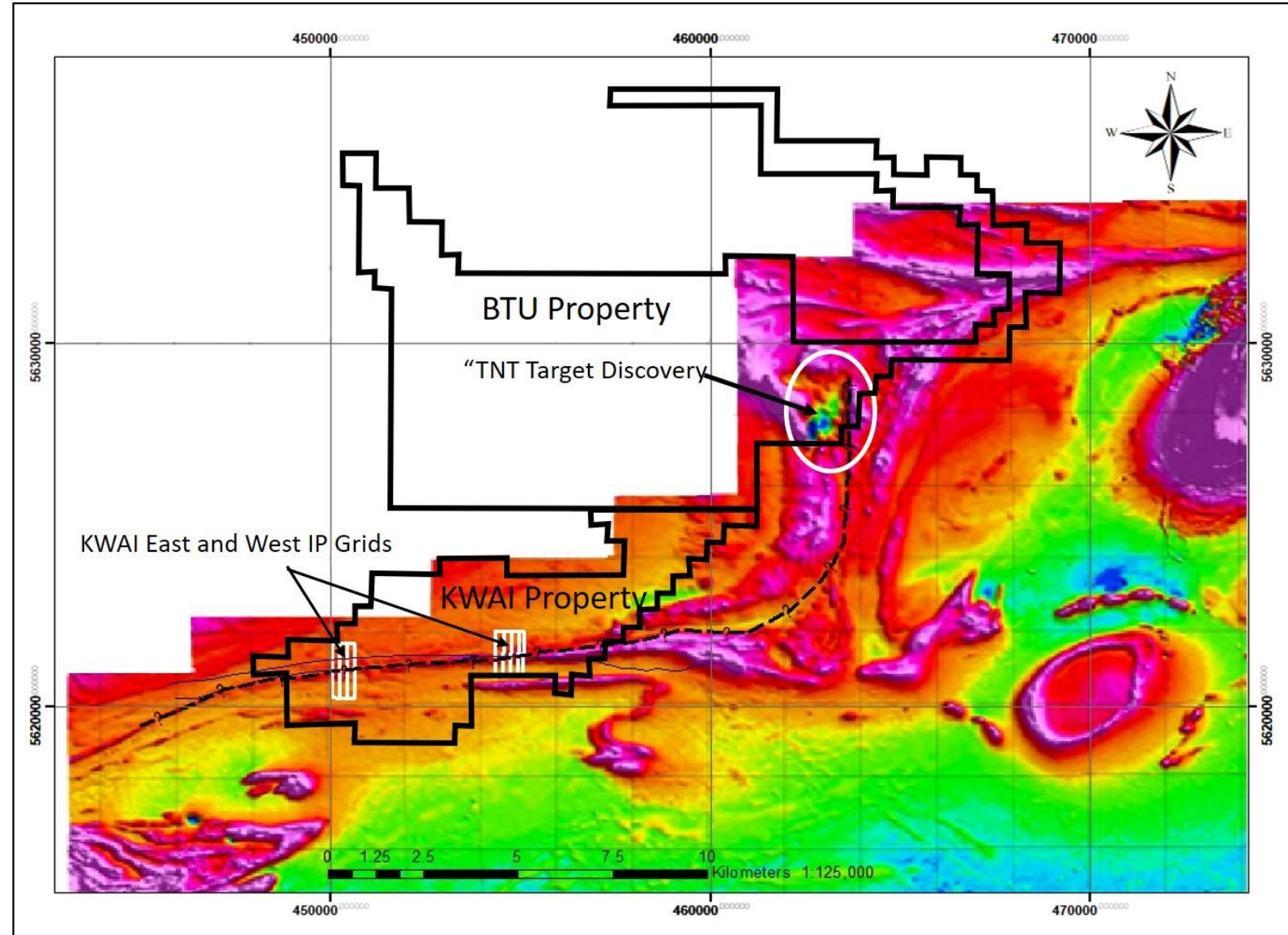
This area of Ear Falls has seen little exploration activity and the area of the two grids had very little to no outcrop exposure at the time the grid were covered by the IP surveys. However, the results of the IP suggest that the zones are not very deep.”

John Grant/Bob Middleton

KWAI and BTU Connection

- The new discovery by BTU (“TNT” showing, drill hole 13) may be an important new type of deposit (VMS) for the Red Lake area and has captured a lot of attention.
- The regional magnetic data shows the distinct magnetic trend going through TNT and then turning to cross the KWAI property.

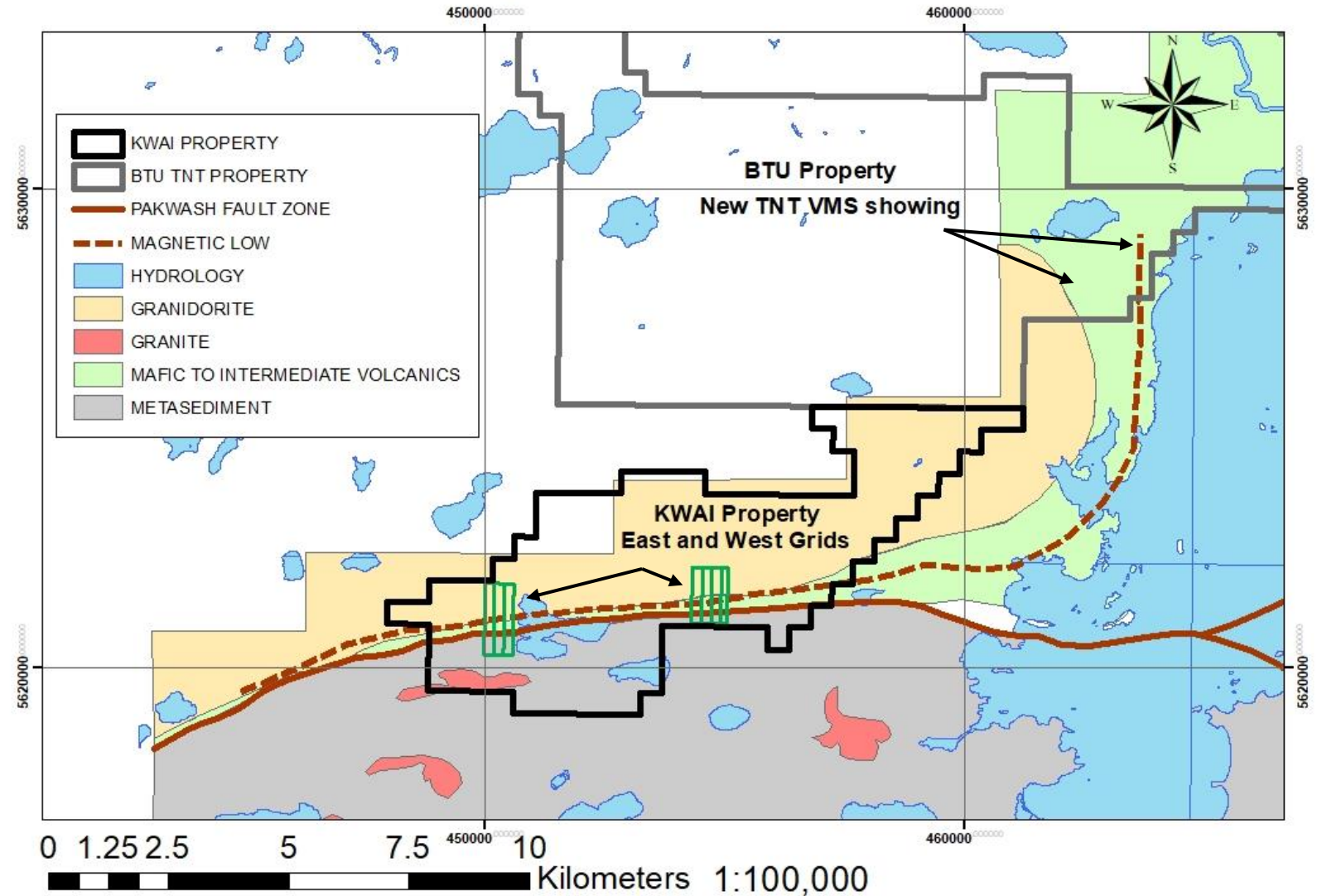
KWAI and BTU Regional Magnetics



KWAI and BTU Connection

- The regional geology tells the same story: the magnetic low from previous slide travels through the mafic to intermediate volcanic geological unit and along the East and West grids of the KWAI IP program

KWAI and BTU Regional Geology



Golden Goliath Resources Additional Projects

<https://www.geologyforinvestors.com/gold-archean-greenstone-belts/>

Wish Ore in the Batchewana Greenstone Belt:

- Gold associated with a major fault structure in mafic to felsic volcanics with associated iron formation. Under explored, Giant Potential.

SLF (Sydney Lake Fault):

- Major deep seated fault structure south of KWAI

Mexico- San Timoteo:

- 100% held by Golden Goliath, covering the former producing San Martin mine. The property is surrounded by Fresnillo PLC who are developing the Orisyvo discovery



Contact Us:

Golden Goliath
RESOURCES LTD



Corporate Office Canada: Suite #910 688
West Hastings Street Vancouver, BC
V6B 1P1 Canada
Tel: (604) 682-2950 Fax: (604) 685-3764
J. Paul Sorbara E-mail:
jps@goldengoliath.com



www.goldengoliath.com