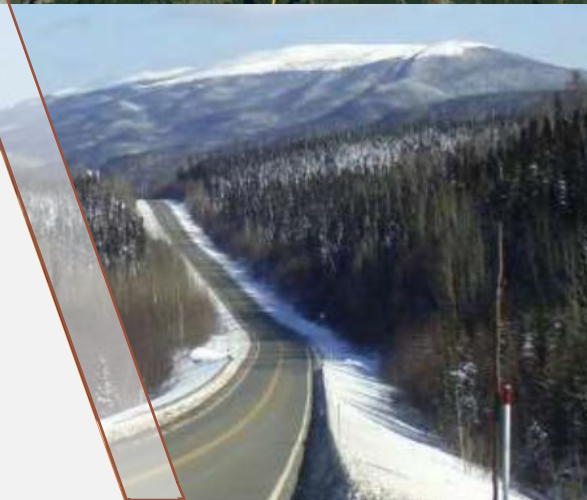
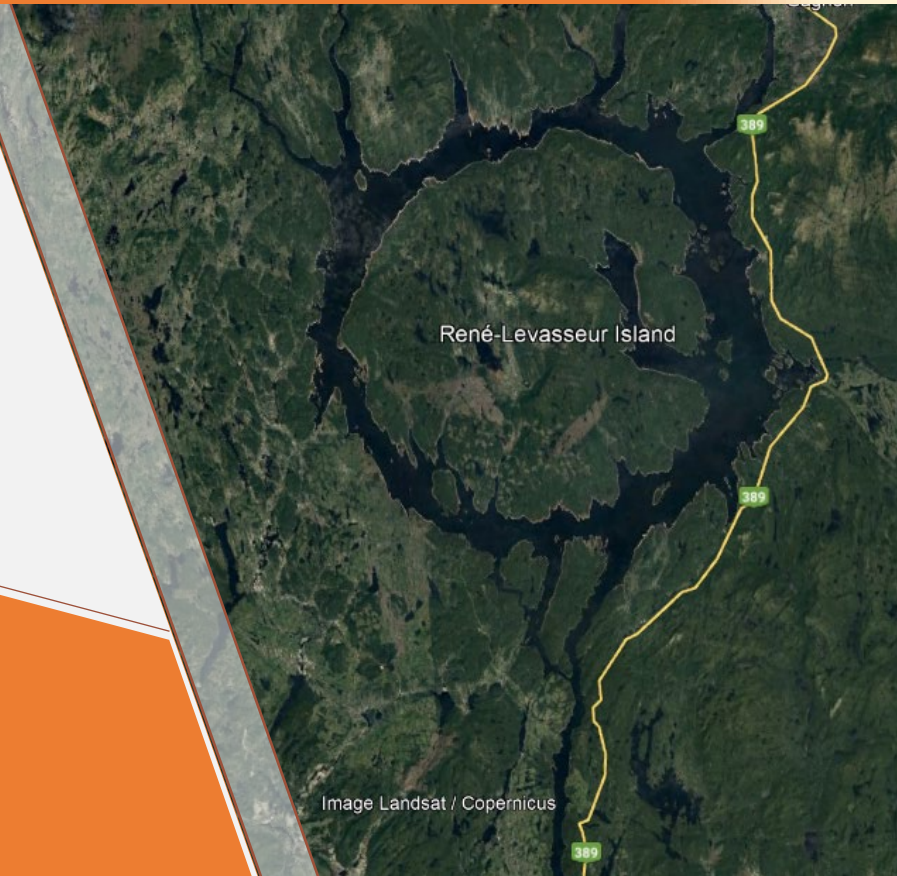




Ernest REE Presentation

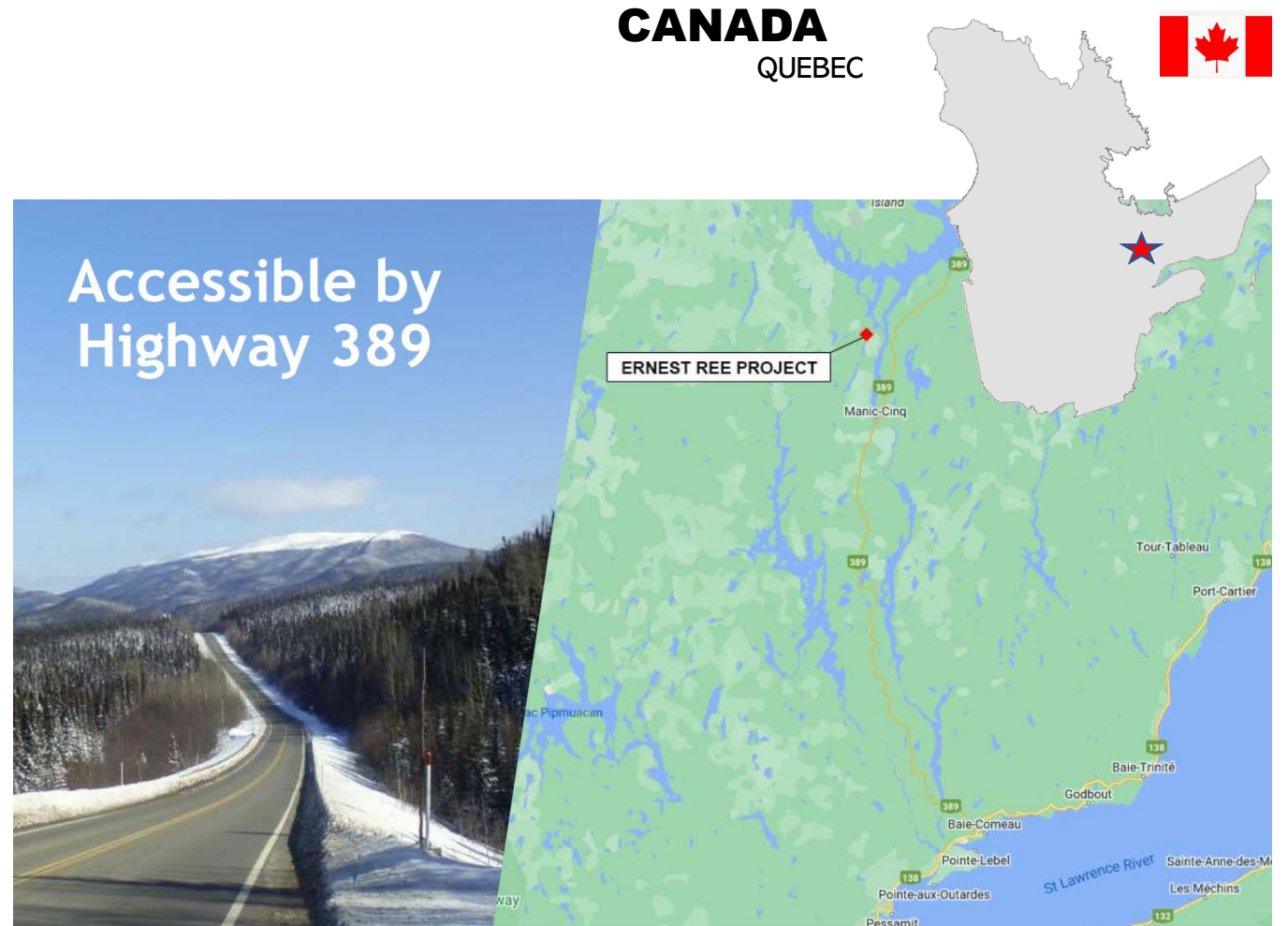
MARCH 2023



Overview of Project

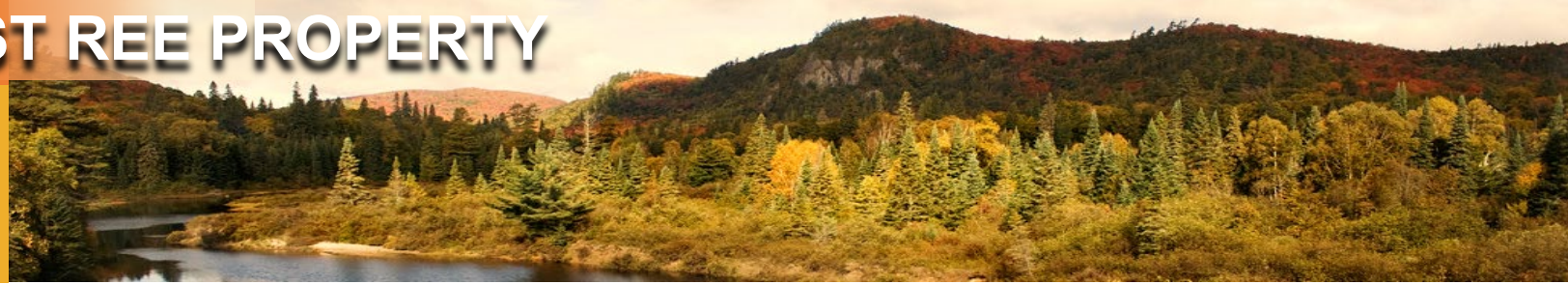
ERNEST REE PROPERTY

- ✓ Option to acquire 100% held by Golden Goliath
- ✓ 34 map claims over 1663ha
- ✓ Located in Central Quebec, stable modern mining jurisdiction
- ✓ Access from highway 389, nearby accommodations
 - ✓ Multiple clearcuts and roads across property



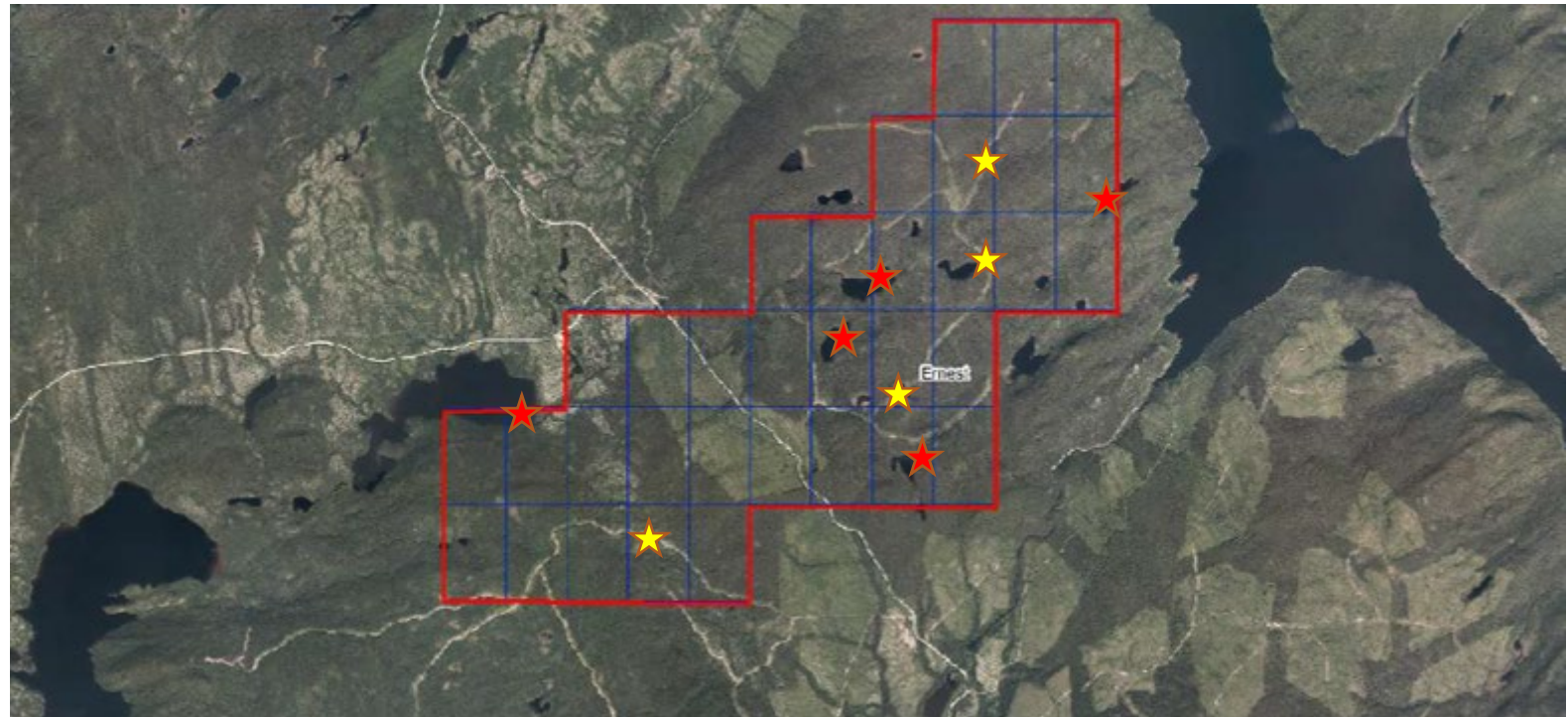
PROJECT FOCUS: ERNEST REE PROPERTY

REGIONAL GEOLOGY



ERNEST REE PROPERTY

- Early stage Rare Earth Element prospect with excellent geological potential.
- MRN geologists collected four rock samples of granitic pegmatite within the Mesoproterozoic Canyon Complex.
- Anomalous results included; 2605 ppm Cerium, 1466 ppm Lanthanum, 965 ppm Neodymium, 274 ppm Praseodymium, 543 ppm Thorium, 1628 ppm Strontium, and 1722 ppm Zirconium.
- Lake Sediment Survey returned 117.8ppm Ce, 65.6 ppm La, and 65.7 Sr

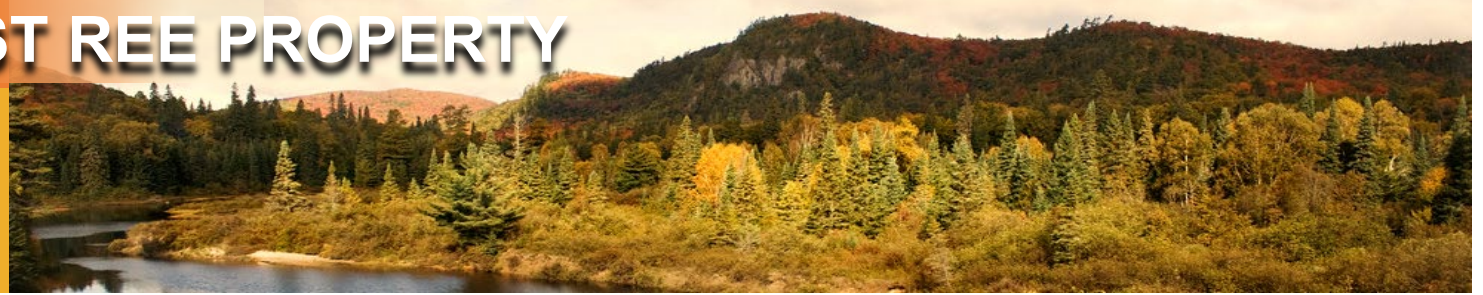


★ Lake Sediment Sample

★ Rock Sample

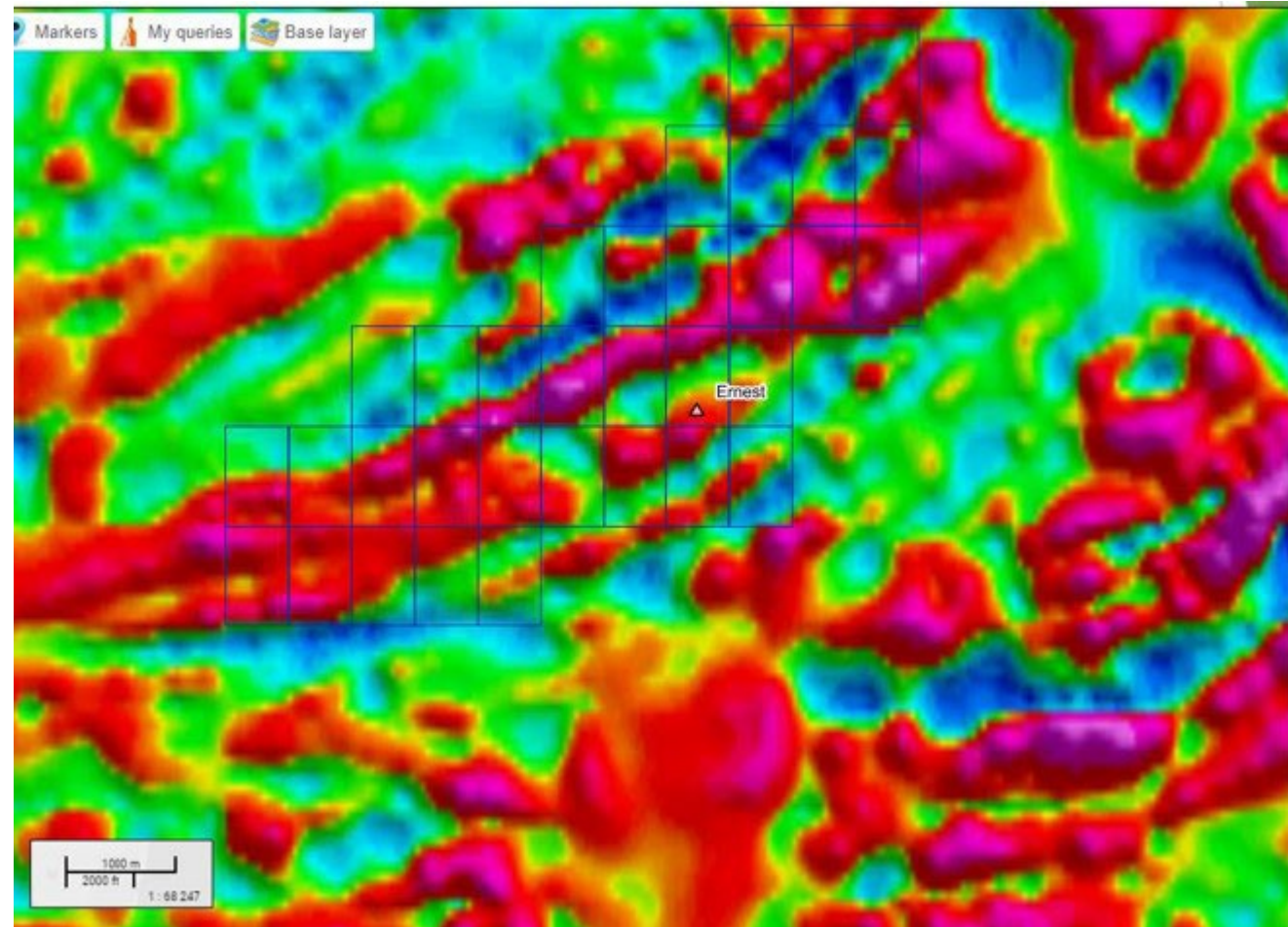
PROJECT FOCUS: ERNEST REE PROPERTY

AIRBORNE MAG



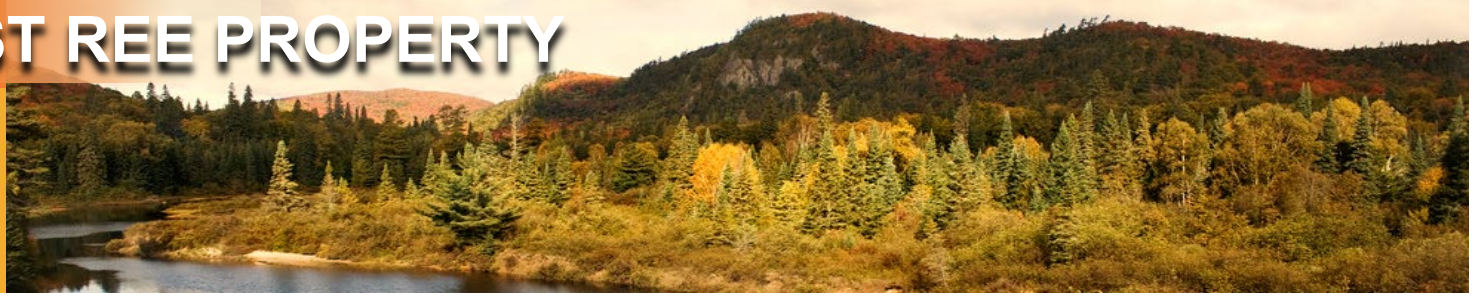
ERNEST REE PROPERTY

- Key target will be rheologically-controlled pegmatite dykes between gabbro-noritic and mangeritic units of the Mezoproterozoic Canyon Complex.



PROJECT FOCUS: ERNEST REE PROPERTY

NEXT STEPS



ERNEST REE PROPERTY

- Summer 2023:
 - Geological mapping
 - Prospecting
 - Radiometric survey
 - Heavy mineral Geochem sampling.






Golden Goliath
RESOURCES LTD



Golden Goliath Resources Ltd.

 Suite 618 - 688 West Hastings Street
Vancouver, B.C., Canada
V6B 1P1

Contact us:

 Tel: (604) 682-2950

 Fax: (604) 685- 3764

 jps@goldengoliath.com